

Content

Introduction **03**

Residences **05**

Penthouses **16**

Neighborhood **30**



Where Location Speaks
Volumes About Who You
Are, What You Desire, and
Where You're Going.



Grow. Dream. Explore. Experience Life Extended

Imagine the space to create, work, exercise, or nurture your little ones—Maison Pacific upgrades your living experience with an open den in select one-and two-bedroom homes.



Interior Features

A kitchen with European flair

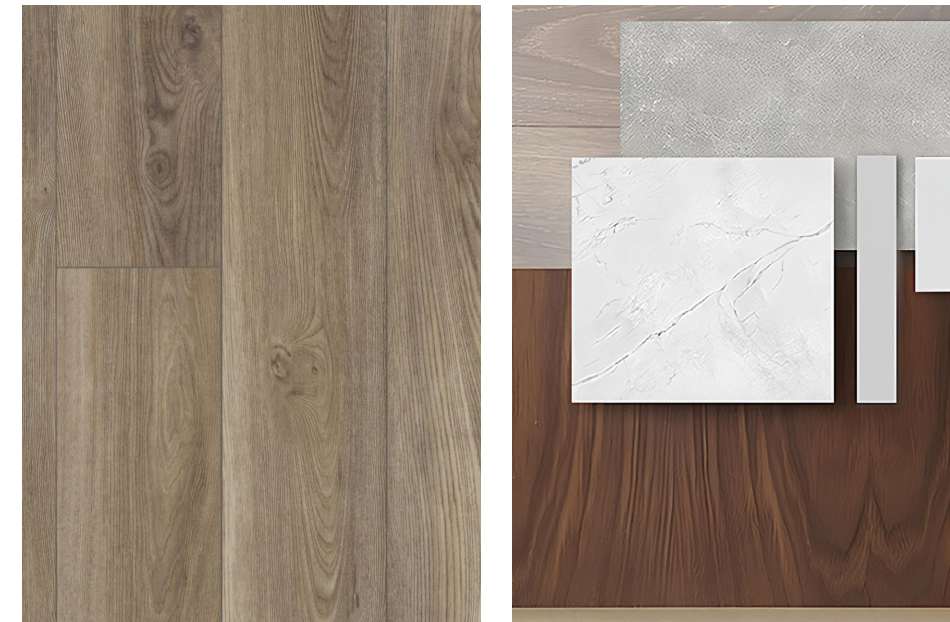


A fully integrated kitchen with modern fixtures, this is your private sanctuary for cooking, hosting, and entertaining.



Effortlessly reset your mood from work to worry-free—with an ensuite that connects the den to the bedroom and a truly breathtaking horizon.

Materials that stand the test of time



From solid construction, walnut flooring and considerate appointments, Maison Pacific creates a strong foundation for a life fulfilled. Classic and contemporary—much like Russian Hill itself—timeless, natural materials hug every corner of every Maison Pacific home.



Dine under the stars on your balcony or catch the rising sun framed by vast, floor-to-ceiling windows.

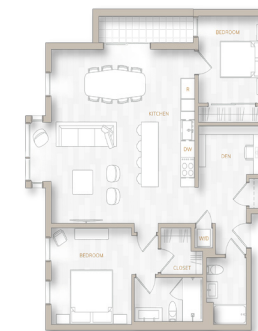
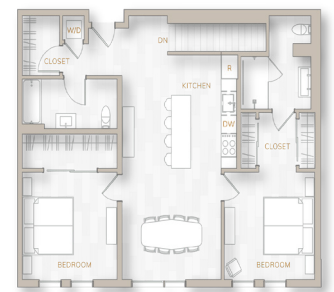
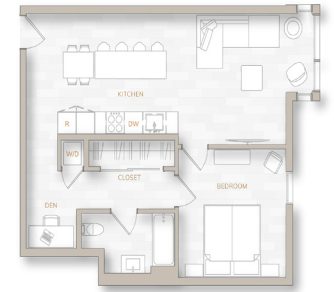


Where Your Space Is Yours
to Explore, Where Form and
Function Converge.

Where a choice of layouts easily indulges your every need and want.

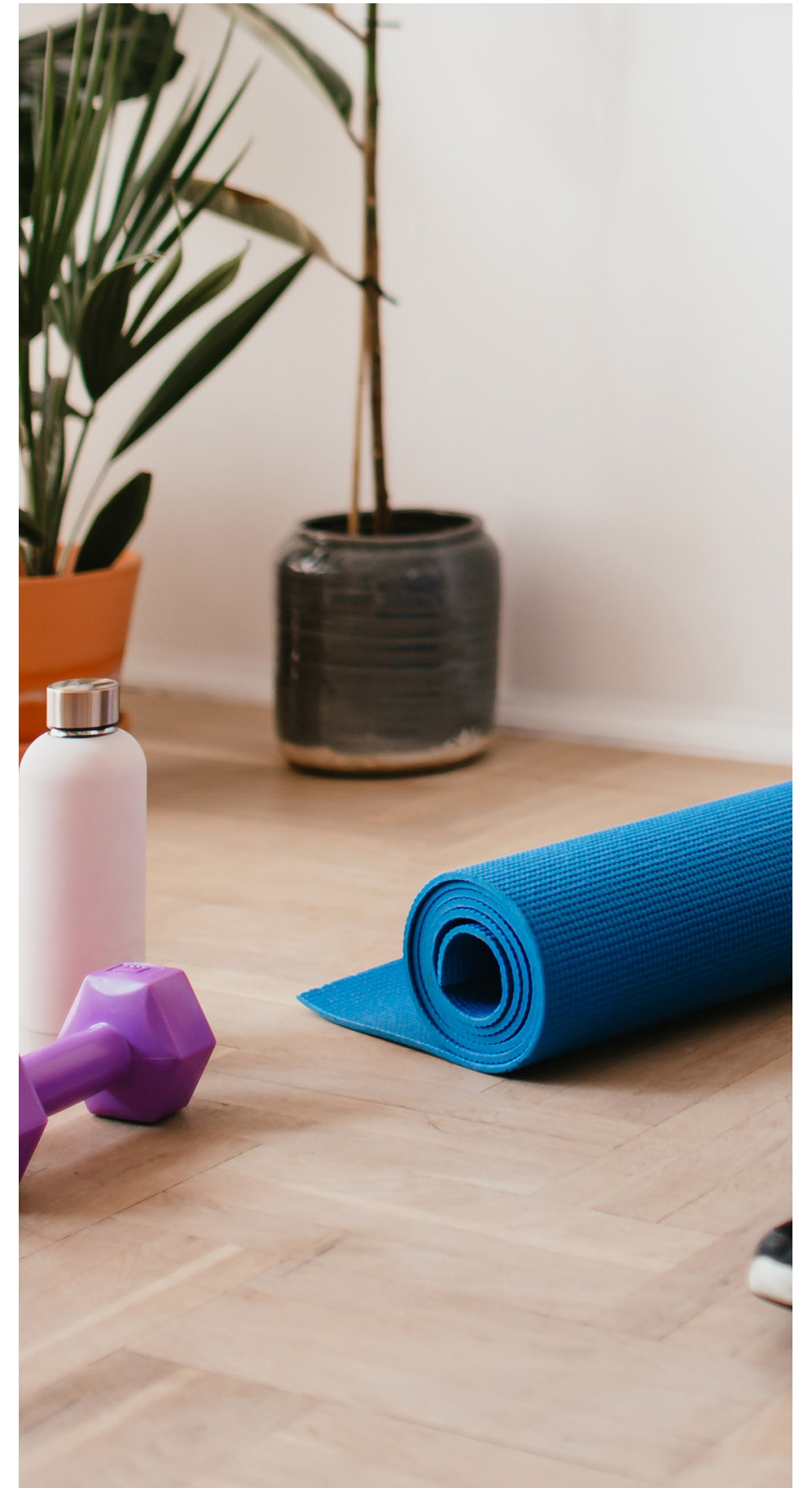
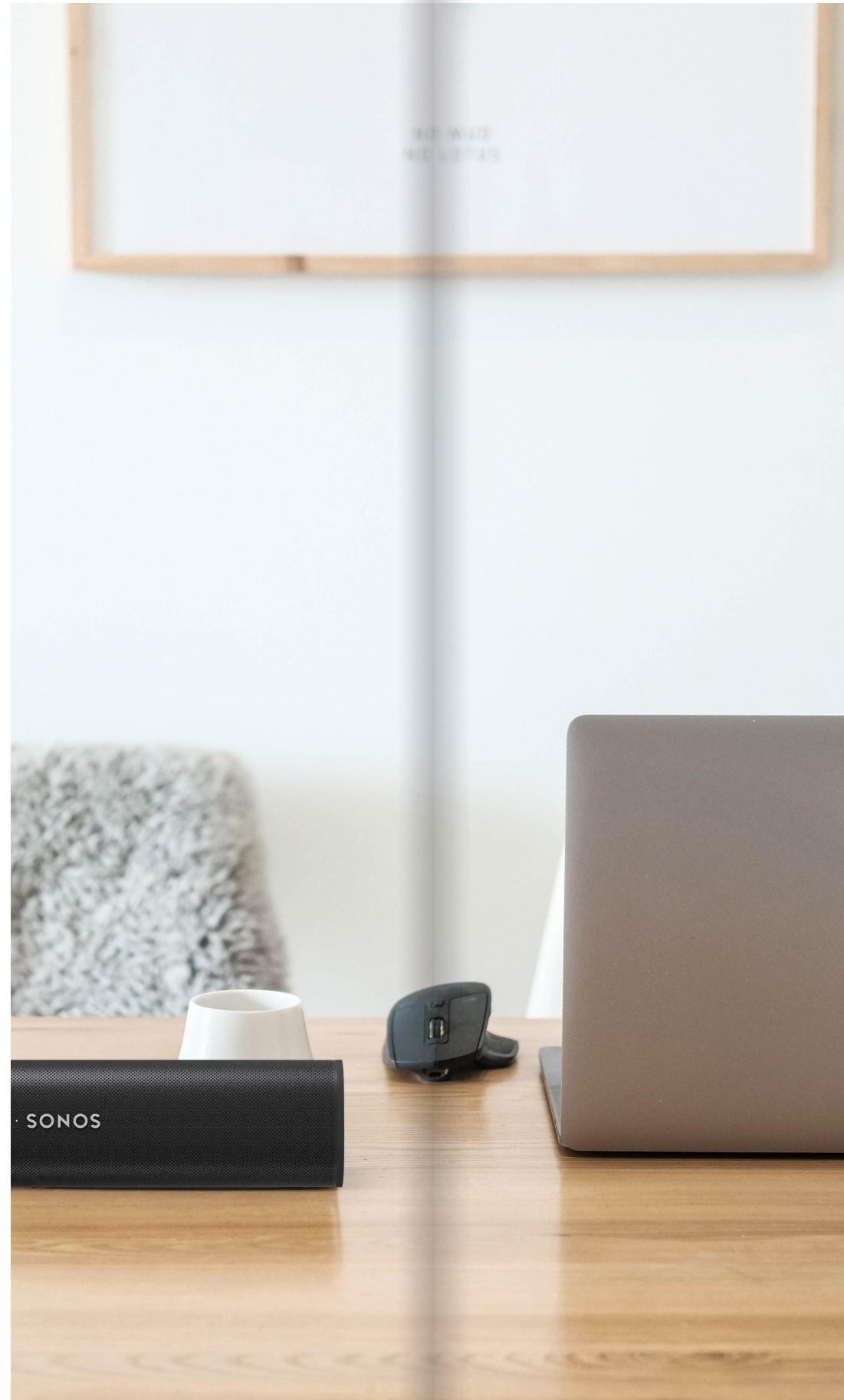
“We designed Maison Pacific to honor the historic legacy of Russian Hill. The sleek exterior blends cohesively with its surroundings; the interior features classic, timeless materials, with expansive floor plans that maximize living space.”

Alan Tse, Creative Director



Tailored to Your Lifestyle

The den, cleverly integrated off the main living area, expands your living space—a Maison Pacific first. Convert the space into a work-from-home office, creative studio, media room, nursery, or exercise space—whatever you need it to be.





Boutique.
Charm.
Modest.
Elegant.



Sixth Floor Penthouses

The Beauty of Scale

An unprecedented opportunity to enjoy one of the best lifestyles that San Francisco has to offer—sixth floor penthouses present a limited collection of three bedrooms and the most spacious residences at Maison Pacific. Crafted with contemporary finishes, outlooks that seem to stretch to forever, and floor plans open to your imagination, this is life on an exceptionally grand scale.



Maison Pacific is your gateway to a life that entertains, excites and inspires—with the penthouse floor, your own private sanctuary. All three-bedroom, 2.5-bath residences feature very distinct layouts, yet each boasts impressive space and views.

The hallway design, wood-panel treatment, and the unit door entrance together establish a sense of arrival rhythm that is unique to the penthouse floor.

Stunning views of Russian Hill are showcased through a wall of floor-to-ceiling windows. Striking black aluminum-framed windows invite brilliant natural light in and a sweeping terrace extends the living and dining area in breathtaking fashion.



From the great windows to the wide open space, we've crafted each penthouse to capture all that is special about Russian Hill and its distinctive lifestyle.



Interior Features



The materials, the individual touches, the design that thoughtfully went into the kitchen transform cooking into an art—especially with modern shaker frame cabinets, matching engineered quartz backsplash and countertops, glass front wine cooler, and stunning views that paint a beautiful picture over breakfast, lunch or dinner.

This is your own private escape, where you can throw your cares away and refresh, relax and renew—with freestanding tubs, custom shaker-style vanities, large format porcelain tile floors and walls, stylish hardware, and plenty of space to unwind.



At your feet are engineered oak wood flooring with accent inlay. Lighter and brighter, it beautifully opens up the floor for an expansive look and feel throughout your home.



Every detail has been considered for the utmost in form, function and finesse—from the kitchen layout to the cabinet space and drawer configuration. Everything fits your needs—and you.



Scenic Vistas

No two penthouse residences have the same outlook. Whether streetscape, the Golden Gate Bridge, Nob Hill or the Transamerica Pyramid, every view is equally spectacular from the sixth floor.

Amenities

1. Boutique lobby with attendant
2. Latch concierge entrance system
3. Roof deck with outdoor grill
4. Private outdoor patios & balconies (in select homes)
5. Bay views (in select homes)
6. Light-filled garden court
7. Secured, freestanding parking (in-select homes)
8. Bike storage room
9. Webpass from Google Fiber



Historic. Balanced.
Distinctive. Experience
Life Within.

Where a poised, sophisticated lifestyle awaits
amid the coveted Russian Hill, with San Francisco
landmarks such as the Golden Gate Bridge as
your backdrop.



At the Corner of Polk And Pacific.

From Pacific Center to the north end of the Bay, Maison Pacific is your new home with its iconic neighborhood among its greatest amenities.





Timeless Character
and Tradition





Embrace the Rich Flavor of Russian Hill

Russian Hill is a neighborhood brimming with character and history. Maison Pacific positions you to experience it all—beautifully.

