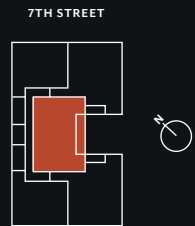


# MAISON à SOMA

## Harrison FLOOR PLAN

3 Bed | 3 Bath  
~1,439 Sq.Ft.

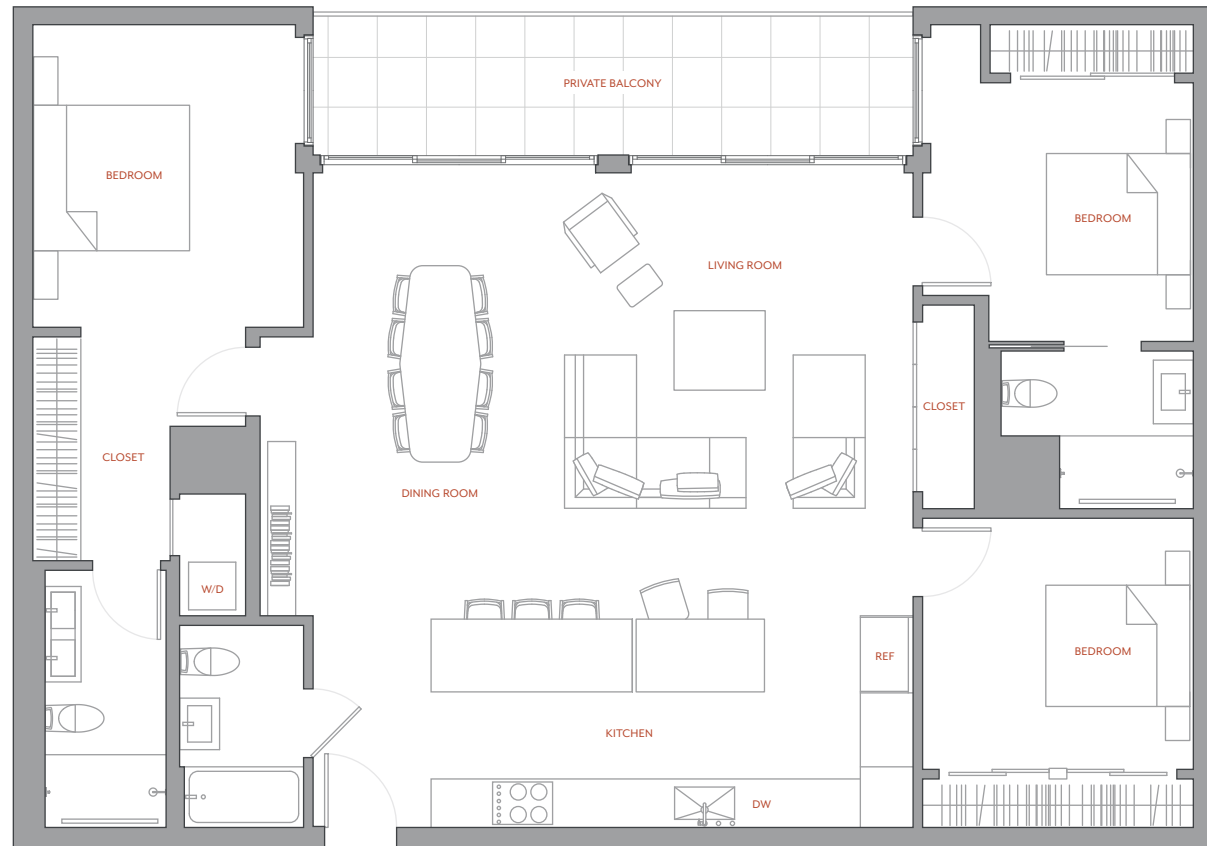



LANGTON STREET

230 7th Street  
San Francisco, CA 94103

415 501 0945

[maisonasomasf.com](http://maisonasomasf.com)



© 2021 | Exclusively represented by JS Sullivan Sales | Marketing, Inc. CA DRE 02097496. This is not an offer to sell but is intended for information only. All renderings, floor plans and handouts are artist's conceptions and are not intended to be an actual depiction of the building or landscaping. The developer reserves the right to make modifications in materials, specifications, finishes, floor plans, scheduling and delivery of homes without prior notice. Modifications may not always be reflected in our model homes. Plans are not to scale. All dimensions are approximate and subject to normal construction variances and tolerances. All square footages are approximate and are for informational purposes only. They are not intended as, nor can they be relied upon, as an exact representation, express or implied. Differing methods of measuring square footage are used for different purposes and will therefore provide different results. Any statement, verbal or written, regarding the square footage size of any home should not be construed to indicate certainty. Not all homes include a balcony and/or patio or amenities that may be depicted on the floorplan. Garage and/or parking space sizes may vary from the final product and may not accommodate all vehicles. The developer makes no representations regarding any view or exposure to light at any time, including any existing or future construction adjacent to or nearby the project by either the developer or a third party. Models used for marketing purposes do not reflect racial preference. Prices, terms and features are subject to change without notice. JS Sullivan Sales | Marketing, Inc. is a real estate broker licensed by the state of California and abides by equal housing opportunity laws. 

**JS SULLIVAN**  
SALES | MARKETING